

**Georgia
Tech**



Georgia Tech–Shenzhen Annual Safety and Security Report 2019



Table of Contents

About Georgia-Tech Shenzhen	1
Preparation of the Annual Safety and Security Report	2
Public Safety	2
Security and Access to GT-Shenzhen Facility	4
Timely Warnings/Clery Act Safety Alerts	7
Emergency Response and Evacuation Procedures	8
Safety Abroad	8
Reporting Crime & Suspicious Behavior	13
Missing Persons.....	14
Institute Policy Statements	15
Alcohol & Drug Policies, Education, & Assistance	15
Sexual Assault, Dating or Domestic Violence, Stalking Prevention and Response	17
Definitions of Reportable Clery Act Crimes and Geography	29
Annual Security Report Crime Statistics.....	32
Annual Student Housing Fire Safety Report.....	34
Other Important Numbers.....	35

About Georgia Tech-Shenzhen

Georgia Tech-Shenzhen is an instructional site of the Georgia Institute of Technology and has enrolled students since August 2014. Currently it offers one degree program - Master of Science in Electrical and Computer Engineering (MS ECE). Georgia Tech-Shenzhen transitional campus is located at 133 Tangxing Road in the Nanshan District of Shenzhen, in south China, adjacent to Hong Kong. GT-Shenzhen transitional campus has three buildings, with Building B48 for faculty offices, classrooms, and other necessary facilities, Building B55 for student housing and Building B51 for research (which has not put into use at this time).

Georgia Tech-Shenzhen faculty and staff have extensive experience with the operation. They work closely with the students and maintain a cooperative relationship with local Chinese authorities.



Preparation of the Annual Safety and Security Report

Georgia Tech-Shenzhen staff prepare this report, to comply with the Jeanne Clery Disclosure of Campus Security and Crime Statistics Act (Clery Act), in cooperation with the Georgia Tech Police Department (GTPD) and local police. Each of the offices provides updated information on its efforts to meet compliance requirements. This report provides statistics for the previous three years concerning reported Clery Act crimes that occurred on the transitional campus where classes take place and the student housing is located.

Georgia Tech distributes a notice of the availability of this Annual Safety and Security Report by October 1 of each year to every member of the Georgia Tech community. Hard copies of the report may be printed from GTPD websites. The report is located at:

www.police.gatech.edu

Members of the public may request a paper copy by contacting:

gtshenzhen@ece.gatech.edu

404-385-1341

Public Safety

Georgia Tech-Shenzhen is committed to providing a safe and secure environment for all faculty, staff and students. Though Georgia Tech-Shenzhen does not have its own police presence, it works in close collaboration with the Chinese local authorities and GTPD.

The Local Police Office

Georgia Tech-Shenzhen is under the jurisdiction of Tanglang Police Station.

Tanglang Police Station

No. 351, Tangxing Rd, Nanshan District

Shenzhen, Guangdong, China

Phone: +11 86 755 2655 2833

American Consulate in Guangzhou

The nearest U.S. Consulate General in Guangzhou to Georgia Tech-Shenzhen is located in Guangzhou, China, approximately 77 miles from the GT-Shenzhen transitional campus. The Consulate is able to provide several services to U.S. citizens, including passport requests, voting registration, notarial services, and assistance to citizens in need. There are 211 trains running both ways on the Guangzhou – Shenzhen route, 187 of them are high-speed trains

with the shortest duration of about 30 minutes. The trains run frequently from 06:00 to 23:00, which makes it very easy to travel to the U.S. Consulate General in Guangzhou.

During an emergent situation, American citizens should contact the after hours calling number for American citizen-related emergencies at (010) 8531-4000.

For non-emergencies, individuals may seek information on U.S. Citizen Services on the Embassy's Website: <https://china.usembassy-china.org.cn/u-s-citizen-services>

In the case of a lost or stolen passport, GT-Shenzhen faculty and students must be immediately reported to the local police station for issuance of a police report. They need to bring this police report to the local Exit and Entry Bureau for issuance of a Confirmation of Reporting the Loss of Passport.

The Confirmation of Reporting the Loss of Passport must also be presented to Chinese authorities when applying for a replacement Chinese visa to replace the Chinese visa in the lost/stolen passport. Failure to obtain a replacement Chinese visa can result in a fine and possible detention when attempting to exit China. Faculty and students must apply for a replacement passport in person with the U.S. Consulate.

Additionally, American citizens or permanent residents are also encouraged to create an account and enroll in the Smart Traveler Enrollment Program (STEP) (<https://step.state.gov/step/>), which is a free service to allow U.S. citizens and nationals traveling and living abroad to enroll their trip with the nearest U.S. Embassy or Consulate. They can receive important information from the U.S. Embassy about safety conditions in their destination country. The program helps the U.S. Embassy contact them in an emergency, whether natural disaster, civil unrest, or family emergency. It also helps family and friends get in touch with them in an emergency.

Below is the contact information for the U.S. Consulate General in Guangzhou and the U.S. Embassy in China.

U.S. Consulate General Guangzhou

43 Huajiu Rd, Tianhe District
Guangzhou, Guangdong Province
China, 510620
Tel: +86 20 3814 5000

U.S. Embassy in China

55 Anjialou Rd, Chaoyang District
Beijing, China, 100600
Tel: +86 10 8531 3000

Security and Access to GT-Shenzhen Facility

GT-Shenzhen classrooms, faculty offices and administrative offices are located in Building B48 at SoFunLand, 133 Tangxing Road. Students visit this building for classes, academic advising, social gathering and other administrative matters. GT-Shenzhen faculty apartments are also located on the fifth floor of Building B48.

The GT-Shenzhen student housing is located in Building B55 at SoFunLand, 133 Tangxing Road.

Security on GT-Shenzhen Transitional Campus

Shenzhen, where GT-Shenzhen lies, is a major city in south China, situated immediately north of Hong Kong. It has a population of approximately 15 million. Even though Shenzhen is one of the largest cities in the world, it is generally safe when compared to other urban areas of similar size. The following factors may contribute to the general safer conditions in Shenzhen than in a large city in the United States:

- It is illegal to own guns in China.
- China has some of the world's harshest drug laws; use of illegal drugs is extremely rare.
- Shenzhen has a booming economy and low unemployment rate.
- The population density is high and people fill the streets even in the evenings.

Police presence is clearly visible throughout the city; that plus overt video surveillance in public spaces in the city both serve to deter crimes. Shenzhen is part of the Pearl River Delta region and is one of the most affluent areas of China. Violent crimes in this region are rare; most of the crimes are economic in nature.

The GT-Shenzhen buildings are serviced by a highly reputable property management company called Chang An Property Management Co. Ltd. This company has passed the international standards - ISO9001, ISO14001 and OHSAS18001 for quality assurance in the facilities management area. Security, custodial and maintenance services are provided by this company. The company has well established procedures to deal with safety and security issues.

Buildings B48 and B55 are guarded by security officers 24/7. In addition, security officers patrol all areas of the buildings regularly during the day and once every two hours during the evening and night hours. The buildings also has security camera installations. All major hallways and entrances/exits of the buildings are monitored 24/7. Security camera footage can be archived.

The buildings are equipped with a siren system to alert occupants of any immediate danger. They are also equipped with water hose cabinets, fire extinguishers, as well as fire-proof doors that can be dropped down with a push of a button to isolate fire in case it happens.

The local fire department conducts unannounced fire safety audits several times a year. The property management company also conducts fire drills a couple of times a year.



All GT-Shenzhen faculty and students are provided with a laminated emergency contact card shown below:

Front:

GT-Shenzhen Emergency Contact Info

Police	Ambulance	Fire
110	120	119

***ALWAYS call GT-Shenzhen Office Manager in case of emergency**

On-Site Emergency Contact Information (country code 86):
***Zhiya Wang, GT-Shenzhen Office Manager: 186-6459-4112**
On-Site Faculty Lead: 156-0297-6813

GTSI
133 Tangxing Road
SoFunLand, Building B48
Nanshan District, Shenzhen, 518071, CHINA
深圳市南山区塘兴路133号集悦城B48栋 (邮编: 518071)

Back:

***ALWAYS call GT-Shenzhen Office Manager in case of emergency**

U.S Consulate in Guangzhou: 43 Hua Jiu Road, Zhujiang New Town,
Tianhe District, Guangzhou, 广州市天河区珠江新城华就路 43 号
Tel: (020) 3814-5775 Fax: (020) 3814-5572
Consular After Hours Emergencies: (010) 8531-4000

Hospital in Shenzhen: Shenzhen University General Hospital
1098 Xueyuan Avenue, Xili University Town
Nanshan District, Shenzhen, 518055, CHINA
深圳大学总医院, 深圳市西丽大学城学苑大道1098号

Georgia Tech Campus Emergency Contact Information
In the unlikely event that you cannot reach any program staff in Shenzhen,
contact the GT Police: +1 (404) 894-2500 24-hours a day.

Timely Warnings/Clery Act Safety Alerts

Should a situation arise, the Director of Georgia Tech-Shenzhen will immediately be contacted to evaluate the situation and decide if it is an on-going or continuing threat to the community requiring a Clery Act Safety Alert, also known as a timely warning, to be issued.

The purpose of these Clery Act Safety Alerts is to notify the campus community of the incident and to provide information that may enable community members to protect themselves from similar incidents. Georgia Tech will issue Clery Act Safety Alerts whenever the following criteria are met: 1) a crime is committed; 2) the perpetrator has not been apprehended; and 3) there is a substantial risk to the physical safety of other members of the campus community because of the crime. Such crimes include, but are not limited to: 1) Clery Act crimes that are reported to any Campus Security Authority or the local police; or 2) crimes in which the Institute determines that the incident represents an ongoing threat to the campus community. If a robbery suspect has already been detained, the crime is not considered a threat to the community and no warning is sent. When issuing Clery Act Safety Alerts under the Clery Act, Georgia Tech withholds as confidential the names of victims. Clery Act Safety Alerts shall be decided on a case-by-case basis in light of all the facts surrounding the crime. Additionally, GTPD may, in some circumstances, issue Clery Act Safety Alerts when there is a pattern of crimes against persons or property.

GT-Shenzhen Office Manager Mr. Zhiya Wang is the first point of contact for students and faculty encountering any emergency. His cell phone number is +86 186-6459-4112; his email address is zwang641@gatech.edu. He has the cell phone number of each program participant and is connected with all students on the social media platform WeChat. In case of emergency, he will notify everyone by text to the cell phone, a message on WeChat, followed by an email to the group.

In case of any security issues in the area, the police will alert the property management company which alerts the GT-Shenzhen Office Manager Mr. Wang, who will in turn alert all program participants as described above.

Each semester, GT-Shenzhen designates an on-site faculty member as the on-site leader and provides him/her with a program-paid Chinese cell phone. The on-site faculty lead is the second contact for emergency situations, after Mr. Wang. The GT-Shenzhen Director splits her time between Shenzhen and Atlanta. In case she is not in Shenzhen when the emergency happens, Mr. Wang will notify her of any emergency as soon as on-site personnel have been taken care of.

Emergency Response and Evacuation Procedures

In case the buildings need to be evacuated, the meeting point for the group is the court just outside of the buildings.

The decision to implement wide evacuation procedures generally rests with Mr. Zhiya Wang and the Director of Georgia Tech-Shenzhen. In situations requiring immediate action, public safety responders (police, fire, environmental health and safety) can also order an evacuation. When evaluating the possible evacuation, consideration will be given to the specific threat, its context, and the recommendation of the public safety officials. This decision must comply with the emergency notification requirements of the Jeanne Clery Disclosure of Campus Security Policy and Campus Crime Statistics Act, as amended by the Higher Education Opportunity Act of 2008 and applicable Department of Education regulations.

In situations where there is an imminent threat that requires the community to take immediate action, Mr. Zhiya Wang and the Director of GT-Shenzhen may initiate emergency notification based upon his/her initial assessment. This may entail an on scene size-up, reports from responding staff, video evidence, and/ multiple calls and reports from the public. The following persons may authorize use of emergency notification:

- Georgia Tech-Shenzhen Director
- Georgia Tech-Shenzhen Office Manager
- On-site Faculty Lead

Safety Abroad

Upon faculty and students' arrival in GT-Shenzhen, they receive detailed information about local resources, safety advice, Georgia Tech-Shenzhen policies, and emergency evacuation procedures.

Personal Safety Tips from the GTPD

Although the victim is never at fault, prioritizing one's personal safety is a good idea. By taking a few simple precautions as you go about your daily activities, you can reduce your chances of becoming a crime victim, particularly when the perpetrator is a stranger.

Basic Rules

- Violation of national laws, ordinances, and statutes will result in legal penalties from the Ministry of Public Security and the Ministry of Justice, and, depending on the severity of the offense, will be given a serious warning that could lead to expulsion from GT- Shenzhen.
- Be aware of your surroundings; stay alert and do not get distracted.
- During winter season, please take awareness of the extremely low temperatures and strong windy days. When you go outside, please pay attention to the falling objects. Do not skating in the rivers or lakes which are full of safety uncertainty.
- Choose well-lit, busy streets and areas, and walk with a friend.
- Use body language to communicate that you are calm, confident, and know where you are going.
- Make eye contact with those around you and walk tall.
- Trust your instincts. Leave if you feel uncomfortable in a setting.
- To escape danger, cross the street, move to a well-lit area, and quickly go to the nearest house or open facility.
- Never prop open exterior doors to residence halls or other buildings.
- Keep room doors locked at all times.
- Carry your keys at all times.

Publicizing Personal Information

- You are cautioned against publicizing personal information—your name, picture, hobbies, and other detailed personal information—on websites and other easily accessible sources.
- When you publicize personal information, you open the door for this information to be used by individuals to commit identity theft and/or other predatory crimes.

When Walking

- Walk facing traffic.
- Carry a minimal number of belongings.
- Keep emergency money for telephone calls and/or transportation.
- Have your keys in your hand when approaching your vehicle or residence.
- If you feel you are being followed by someone in a vehicle, change your direction and write down the license plate number.

Jogging, Bicycling, and Other Outdoor Activities

- Choose safe, well-populated routes.
- Vary your routine, including the times you perform certain activities and the routes you take to or from such activities.
- Wear light, brightly colored clothing, especially at dusk and at night.
- Avoid jogging, biking, and other outdoor activities alone at night.
- If possible, carry a personal safety alarm.

- Do not wear headphones.

What If It Happens to You?

- Do not resist if the attacker is only after your purse or other valuables.
- Remain calm and do not show signs of panic, anger, or confusion.
- Call the police immediately or the emergency contact. Identify yourself and your location.
- Try to get a good description of your attacker, focusing on attributes such as:
 - Age – Sex – Scars – Race – Height – Tattoos
 - Weight – Complexion – Type of Clothing – Body Build

For Your Room and Apartment When You're Away

- Be sure all of your windows and doors are locked before you leave.
- Turn off or unplug unnecessary appliances before you leave.
- Valuables should not be visible through the windows and doors.
- When possible, take valuables with you, or lock them up.
- Ask a trusted neighbor to watch your apartment.

While You're Out or Shopping

- Stay alert and be aware of everything around you. Take a minute to observe who may be watching you. Criminals often target people who are distracted.
- Don't use short cuts through alleys or walkways; stay in well-lit and well-traveled areas.
- When possible shop with friends or relatives - there is safety in numbers.
- As you shop, be alert in crowded places. Among pickpockets' favorites are jammed aisles, elevators, and public transportation stops, especially at rush hour.
- If you must take a wallet or purse, carry it close to your body with the clasp nearest you and be alert. They are prime targets of criminals in crowded shopping areas, transportation terminals, bus stops, on buses and other rapid transit. Never leave your wallet or purse unattended in a shopping cart or on a counter.
- Avoid carrying large amounts of cash.
- Make a list of all your credit/debit cards and their numbers and keep this list at home. This will assist you and the police if they are stolen. Notify the credit card issuer immediately if your credit card is lost, stolen or misused.
- Be alert for suspicious persons loitering in parking lots.
- Beware of strangers approaching you for any reason. "Con-artists" may try various methods of distracting you with the intention of taking your money or belongings.
- If you feel unsafe, ask mall or store security for an escort before leaving your shopping location.

Before Travelling

- Do some research about your intended destination and find out about any risks or potentially dangerous areas to avoid.
- Make sure your parents or friends have the cell phone numbers and full names of your traveling companions in case you lose your phone or some other problem arises that would make it difficult to contact you.
- Let your parents know your planned travel route, any planned stops, diversions, etc., and the physical address and the phone number of your intended destination.
- Be sure to lock your room and apartment and make sure your valuables are completely secure. Unplug unnecessary appliances and equipment that might increase risk of a fire.
- While traveling, always wear your seatbelt, obey the speed limits and be prepared to adjust your speed if weather conditions require it.
- Get sufficient rest before traveling and always drive safely and defensively.
- Don't drink and drive.

Property Safety Tips

The following are some of the most frequent targets of theft and some security tips to help you protect your property. Students should contact a GT-Shenzhen staff member in the event that personal property is stolen.

At the ATM

- If you must use an ATM, choose one that is located inside a bank, mall, or well-lighted location. Withdraw only the amount of cash you need.
- Stay alert and be aware of your surroundings when you use an ATM.
- If you notice anything unusual, cancel your transaction, pocket your card and leave immediately. Go to a safe place and call police.
- Have everything ready (deposit slips, card) when you arrive at the ATM. When you have completed your transaction, pocket your cash and card immediately.
- Protect your password or PIN by shielding the ATM keypad from anyone who is standing near you.
- Do not throw your ATM receipt away at the ATM location.
- Treat your ATM card like cash and guard it carefully. Never write your pin number on the card or give account numbers or card information over the phone, unless you know exactly to whom you are speaking.

Fraud Prevention

- Refuse any form of marketing and protect your personal information.
- Take care of your personal documents, and do not let others use them on your behalf.
- Always carry a photocopy of your important documentation (e.g. passports).
- Pay attention to any kinds of tele-fraud.
- Keep your password safe.

Bicycles

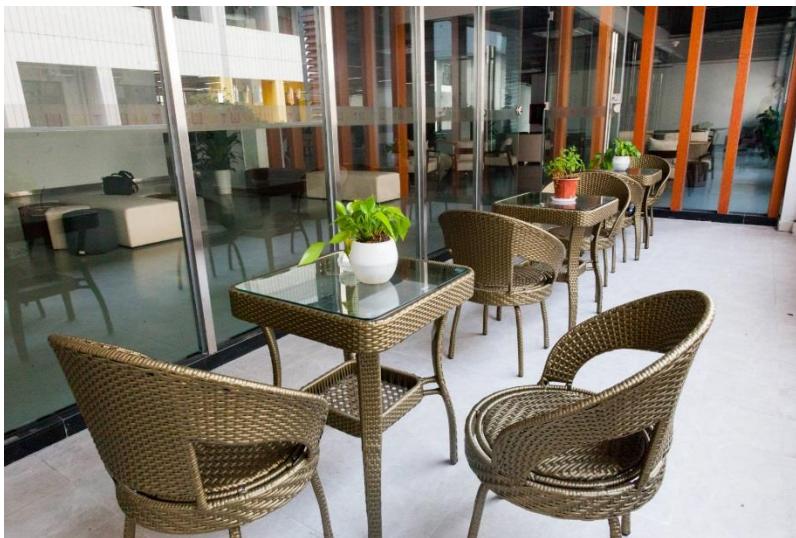
- Park your bicycle in areas with a high volume of pedestrian traffic.
- Lock your bicycle with a high quality U-shaped lock.

Computers and Other Office Equipment

- Lock your room every time you leave.
- Keep records of your equipment that include a description of the equipment along with the make, model, and serial number.
- Engrave or apply an owner or departmental identification marking
- Secure computers with cable locks or other security devices.
- Consider purchasing and installing a tracking device on your laptop.

Textbooks and Thefts

- Write your name or owner identification number on several pages inside your books.
- Never leave your book bag or books unattended.



Reporting Crime & Suspicious Behavior

All members of the Georgia Tech community, including all students, faculty, staff, and guests, are encouraged to report all crimes and other public safety concerns in a timely manner. To report a crime in progress or a situation presenting immediate danger, students, faculty and staff are encouraged to report all crimes and public safety incidents or concerns by reaching out to the closest staff member from the list below or calling the local police.

These crimes, as defined by the Jeanne Clery Disclosure of Campus Security Policy and Campus Crime Statistics Act (Clery Act), include: murder, non-negligent manslaughter, negligent manslaughter, rape, fondling, incest, statutory rape, robbery, aggravated assault, burglary, motor vehicle theft, arson (limited to investigated cases determined by law enforcement authorities to be arson), domestic violence, dating violence, and stalking.

In the Georgia Tech-Shenzhen:

- GT-Shenzhen Office Manager
- GT-Shenzhen Director

To report non-emergency crimes representing no immediate danger, students and/or faculty members are asked to report any concern to the Office Manager Mr. Zhiya Wang or staff members in charge of disciplinary issues and student conduct.

All members of the Georgia Tech community, including students, faculty, staff, and guests, may report specific crimes to any Campus Security Authority (CSA). The Clery Act defines CSA as (1) a member of a campus police department, (2) an individual with responsibility for campus security who is not a part of a police or security department, (3) anyone designated in an institution's campus security policy as a recipient of reports of criminal offenses from students or employees, and (4) an official of the institution having significant responsibility for student and campus activities.

With Georgia Tech-Shenzhen, the following positions meet the definition of a CSA.

- Georgia Tech-Shenzhen Director
- Georgia Tech-Shenzhen Office Manager

CSAs are responsible for reporting allegations of Clery Act crimes that are reported to them in a timely manner. The person making the report must be asked if he or she consents to be identified. CSA crime reports should include enough detail to properly identify the crime, location of the incident, date and time it occurred, and personally identifying information when available. All CSAs will follow the proper procedure to take action by calling local authorities and/or the Division of Student Life in Atlanta, as well as the emergency contact at OIE and the Graduate Program Director in Atlanta.

Important Telephone Numbers

Students and faculty receive a wallet-size card with phone numbers of the Georgia Tech-Shenzhen emergency contacts. For immediate assistance, they will thus be able to call the Emergency Response Phone numbers: 110 for police, 119 for fire, and 120 for first-aid ambulance.

Police	110
Fire	119
First-aid Ambulance	120

Missing Persons

Missing Student Policy

If there is reason to believe that a student with GT-Shenzhen is missing (i.e., when his or her whereabouts are unknown and unexplainable for a period of time regarded as highly unusual or suspicious in consideration of the person's usual behavior patterns, routines, or plans), the person who realizes that the student is missing must contact the GT-Shenzhen Office Manager Mr. Zhiya Wang. A procedure will immediately be started to identify the whereabouts of the student. If deemed necessary, Mr. Wang will go in person to the student's dorm and, if necessary, will contact the other students of the group via WeChat to request their help in locating the missing student. Should a student remain missing, the Program Director will be informed.

There is no waiting period to report a missing person to Mr. Zhiya Wang. Upon notification that a person is or may be missing, Mr. Zhiya Wang will give full consideration and attention to the report, including careful recording of factual circumstances surrounding the disappearance and identifying those cases when an individual may be in jeopardy. He will exercise particular care in instances involving individuals who may be mentally or physically impaired, missing or unidentified children, and others who are insufficiently prepared to take care of themselves. If it is determined that a student is, in fact, missing, Mr. Wang will, as soon as possible and practical, notify the appropriate administrators and additional law enforcement agencies as appropriate.

Students participating in the Georgia Tech-Shenzhen programs are encouraged to travel in groups over the weekend and to submit information about planned trips.

All contact information collected for the purpose of locating missing students shall remain confidential, will be used only for the purpose specified herein, and will not be disclosed outside of the realm of a missing student investigation.

Institute Policy Statements

Georgia Tech-Shenzhen follows Georgia Tech policies for student conduct, disciplinary processes, prevention and response to sexual assault, dating or domestic violence, and stalking, as outlined in the main Georgia Tech Annual Safety and Security Report, and in the institute policy library:

- Non-Academic Misconduct: <http://www.policylibrary.gatech.edu/student-life/student-code-conduct>
- Sexual Misconduct: <http://www.policylibrary.gatech.edu/student-life/sexual-misconduct>
- Anti-Harassment Policy: <http://www.policylibrary.gatech.edu/employment/anti-harassment-policy>
- Student Alcohol Policy: <http://www.policylibrary.gatech.edu/student-affairs/studentstudent-organization-alcohol-policy>
- Employee Alcohol and Illegal Drug Use: <http://www.policylibrary.gatech.edu/employment/employee-alcohol-and-illegal-drug-use>

Alcohol & Drug Policies, Education, & Assistance

Alcoholic Beverages

Any use of alcoholic beverages must be in compliance with the GT-Shenzhen policy. Students of legal drinking age may possess and consume alcoholic beverages only in their private spaces. Alcohol may not be consumed in common areas or in the GT-Shenzhen academic facilities.

Georgia Tech has established policies and procedures governing the possession, sale, and consumption of alcoholic beverages on campus:

- The Student Alcohol Policy may be obtained through the Office of Student Integrity or through the Georgia Tech Policy Library at: <http://policies.gatech.edu/studentstudent-organization-alcohol-policy>.
- The Employee Alcohol and Illegal Drug Use Policy may be obtained from Georgia Tech Human Resources or through the Georgia Tech Policy Library at: <http://policies.gatech.edu/employee-alcohol-and-illegal-drug-use>.
- The Campus Alcohol Policy can be found on the Georgia Tech Policy Library website at: <http://policies.gatech.edu/campus-use-facilities/campus-alcohol-policy>.

- The Good Samaritan/Medical Amnesty Provision can be found at:
http://osi.gatech.edu/sites/default/files/images/good_samaritan-_medical_amnesty_provision1.pdf

At any campus function for students where alcohol is served, campus officials must give approval and certain provisions must be made. Each person is legally responsible for his or her actions in all mental and physical conditions, including those induced by alcoholic beverages.

Illegal Drugs

In accordance with Georgia Tech policies, Georgia Tech-Shenzhen prohibits the possession or use, without a valid prescription, of any substance currently classified as a dangerous drug by the Georgia Controlled Substance Act. Any individual breaking the law will be subject to disciplinary action and arrest.

Substance Abuse Education

Georgia Tech-Shenzhen is committed to maintaining a campus free of drug and alcohol abuse and assisting all employees and students in finding ways to address such problems. Educational programs addressing these issues are supported and encouraged through a variety of departments on the Georgia Tech main campus. Anyone aware of substance abuse problems with roommates, friends, or coworkers is encouraged to contact the GT-Shenzhen staff member for help.

Substance Abuse Assistance

For students with substance abuse problems, assistance is available through the Georgia Tech Counseling Center and Health Initiatives.

The Counseling Center has experienced professional counselors and psychologists to assist students in need. Students are scheduled for individual appointments, and all information is kept strictly confidential. Health Initiatives has health educators who are able to provide information and referrals for programs as well.

Counseling Center 404-894-2575
 Health Initiatives.....404-894-9980

Georgia Tech faculty and staff may obtain assistance through the Office of Human Resources Employee Assistance Program at 404-894-1225. Counseling and referral services are provided by appointment, and all information is kept strictly confidential. The Faculty and Staff Assistance Program also offers training and educational programs regarding drug and alcohol awareness.

Applicable Local Laws

Students are expected to abide by local laws. It is the responsibility of students to assume the risks associated with alcohol/drug use and abuse.

Sexual Assault, Dating or Domestic Violence, Stalking Prevention and Response

Georgia Tech-Shenzhen is actively engaged in preventing and responding to sexual assault, dating or domestic violence, and stalking. These crimes are not tolerated at Georgia Tech-Shenzhen and are a violation of the Student Code of Conduct and state law.

VOICE (Sexual Violence Prevention and Advocacy Initiative) is a Georgia Tech main campus initiative founded on the premise that everyone has the right to live and learn at Georgia Tech, free of violence or the threat of violence. This initiative seeks to create a campus culture that promotes respect, communication, and equity among the Georgia Tech community. The VOICE initiative is led by staff in Health Initiatives and involves students, faculty, and staff from across the campus community, including GTPD, Stamps Health Services, the Department of Housing, Residence Life, Greek Life, the Counseling Center, the Division of Student Life, Student Government, the Athletic Association, and others. More information can be found at <https://healthinitiatives.gatech.edu/well-being/voice>.

Facts about Sexual Assault, Dating, or Domestic Violence, and Stalking

- Most survivors of sexual assault are on a first-name basis with the perpetrator. On college campuses, only about 10 percent of sexual assaults are committed by a stranger.
- Consent for sexual activity is the presence of a YES, not the absence of a NO. If you aren't sure if your partner is giving consent, ask in clear terms.
- Sexual violence, including sexual assault and dating or domestic violence, are more commonly perpetrated by men against women. However, the majority of men are not perpetrators, and people of all genders and sexual orientations can be victimized.
- Alcohol is involved in the majority of cases of sexual assault on college campuses. In fact, sexual assaults often occur when alcohol is used coercively to incapacitate the victim. Know your limits when it comes to alcohol, and respect others' limits.
- Dating or domestic violence is not always physical, and there are often warning signs of abuse that escalate to physical violence. If you see warning signs in your relationship or that of a friend, seek immediate support and consider creating a safety plan.
- Stalking can take many forms and is not always committed by a stranger. In fact, ex-

boyfriends or girlfriends often stalk after the relationship has ended.

Strategies for Preventing Perpetration:

- Everyone has the right to have boundaries in a relationship, sexual or otherwise. Understand and respect your partner's limits.
- Know your own sexual limits.
- Men who use callous sexual language are more likely to be perpetrators of sexual assault. When you hear someone talking about women or sex in a derogatory way, speak up!
- Learn more about how different people communicate differently about sexual activity. A lack of communication or mixed signals is never an excuse for sexual assault.
- Seek information to learn more about what survivors of sexual violence go through and how you can support them.
- No matter your gender, if you are initiating sexual activity, you are responsible for seeking and receiving clear consent. People who are impaired or incapacitated by alcohol or drugs cannot give consent.

Bystander Intervention

Intervening can be difficult, but every person on campus, whether a student, staff, or faculty member, has a role in preventing or responding to violence before, during, or after it happens. It can be as simple as see something, say something.

Bystander Intervention Tips:

- Sexual violence occurs when a culture tolerates these behaviors, and it starts with rape jokes or sexist language. If you hear it, remember that you don't have to laugh or participate.
- If you witness a potentially sexually violent situation, step in. Intervening can be direct or indirect – the important thing is that you do something. If you don't feel comfortable addressing the potential perpetrator directly, consider causing a distraction or getting someone else to help you. Even if you don't know the people involved, you can still help. If it is happening to a member of the Georgia Tech community, it's your business.
- Being an active bystander might mean helping after an assault occurs. Learn more about options available to survivors, and offer help and support if someone you know experiences any form of sexual violence. Believe the survivor and be supportive of their choices.

The VOICE initiative takes a comprehensive approach to sexual violence prevention and awareness programming on the Georgia Tech main campus. Yearly programming includes a VOICE training series, awareness events and campaigns, guest speakers, classroom and student organization presentations, and workshops for staff and faculty. All new students and employees on the Georgia Tech campus receive mandatory training on the identification and prevention of sexual violence, including sexual assault, dating violence, and stalking.

Students

The VOICE's sexual violence prevention programs contain: definitions of consent, sexual assault, dating/domestic violence, and stalking; myths related to sexual violence on campus; information on the Georgia Tech Student Sexual Misconduct Policy; safe and positive options for bystander intervention; sexual violence prevention strategies; and ways to support a survivor. VOICE serves thousands of students each year with trainings, speakers, and awareness campaigns. As part of its comprehensive health programming, Georgia Tech requires first-year undergraduate and incoming transfer students to complete *AlcoholEdu* and *Sexual Assault Prevention for Undergraduates* as part of comprehensive health programming; all first-year graduate students are expected to complete the online *Sexual Assault Prevention for Graduate Students* course. Students can visit www.voice.gatech.edu to learn more about Georgia Tech's sexual violence prevention and response activities, or email voice@gatech.edu for more information.

Faculty and Staff

Pursuant to its Policy of Non-Discrimination and Affirmative Action, Anti-Harassment Policy, and Sexual Misconduct Policy, Georgia Tech prohibits its faculty and staff members from engaging in discriminatory conduct on the basis of gender, including sexual harassment and sexual misconduct. The University System of Georgia (USG)'s Sexual Misconduct Policy applies to all members of the USG community, including Georgia Tech. Georgia Tech's sexual misconduct policy adopts and incorporates the USG policy. Among other things, the policies contain definitions of consent, nonconsensual sexual contact, dating violence, domestic violence and stalking.

The USG policy is located at:

<https://www.usg.edu/policymanual/section6/C2655>

Georgia Tech's policy is located at:

<http://policylibrary.gatech.edu/student-life/student-sexual-misconduct>

Georgia Tech faculty and staff can actively foster and maintain a campus culture where sexual assault, sexual harassment, relationship violence, and stalking are not tolerated. Georgia Tech Human Resources has a facilitator-led course that engages participants to learn

about and understand their role as responsible employees in addressing and reporting sexual misconduct. This course covers relevant procedures and resources to help prepare staff and faculty with how to respond effectively when they become aware of an incident at Georgia Tech. Participants are given opportunities to practice learned skills by using case-study scenarios and through active discussion. Georgia Tech faculty and staff can view and sign up for available sessions by viewing the Workplace Learning & Professional Development catalog or visiting trains.gatech.edu. For any questions, please contact Rachel Watts at rachel.watts@ohr.gatech.edu.

Faculty and staff who would like to learn more about resources for sexual assault, dating or domestic violence, sexual harassment and stalking can visit www.voice.gatech.edu or titleix.gatech.edu. Also, contact VOICE by email at voice@gatech.edu for information on upcoming events and training opportunities. VOICE trainings are available upon request for professional staff, student staff, academic classes, and organizations. VOICE's sexual violence prevention programs contain: definitions of consent, sexual harassment, sexual assault, dating/domestic violence, and stalking; myths related to sexual violence on campus; information on the Georgia Tech Sexual Misconduct Policy; safe and positive options for bystander intervention; sexual violence prevention strategies; and ways to support a survivor. Faculty and staff are also welcome to serve on the Sexual Violence Prevention Alliance, a multidisciplinary committee that meets monthly to address campus programming and communication related to sexual violence prevention and response.

Crisis Response Services Available

The Georgia Tech community has a wide range of services available to support and help survivors of sexual assault, dating or domestic violence, and stalking. Regardless of where an offense occurred, if a Georgia Tech student or employee reports that she or he is a victim-survivor of sexual assault, dating or domestic violence, or stalking, the victim is provided with a written explanation of her or his rights and options.

In addition to receiving immediate assistance from the Mr. Zhiya Wang by calling his phone number, students at Georgia Tech-Shenzhen are advised to call the police (110).

Options for Seeking Medical Attention

If an assault has just occurred, seeking medical attention is important for medical reasons, as well as to collect evidence for a law enforcement investigation. The First-aid Ambulance can be reached by calling 120.

Georgia Tech-Shenzhen advises the faculty and students to use the following local hospital with English-speaking doctors. Additionally, a staff member of Georgia Tech-Shenzhen will accompany the faculty or the student to the hospital, if the incident happened locally.

Hospital in Shenzhen:

Shenzhen University General Hospital
1098 Xueyuan Avenue, Xili University Town
Nanshan District, Shenzhen, 518055, CHINA
深圳大学总医院, 深圳市西丽大学城学苑大道 1098 号

Route: About 15 minutes walking distance from GT-Shenzhen campus.

Contacts: 0755-21839999

Website: <http://sugh.szu.edu.cn/>

Appointment Hotline: 0755-21839888

Online Booking:

- By WeChat: To search WeChat office account of Shenzhen University General Hospital
- Mobile app: Health 160

Walk-in Appointment:

- Self-service machine, toll booth and reception desk on 1F of Outpatient Building

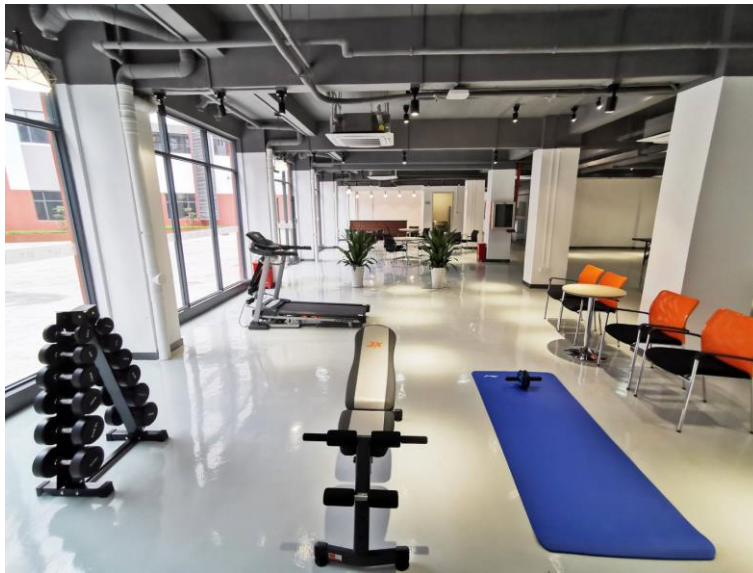
Counseling Services

The Georgia Tech Counseling Center is committed to assisting students who have experienced sexual violence of any form, including sexual assault, dating or domestic violence, and stalking. Eligible students with Georgia Tech-Shenzhen have the option of using the confidential services at the Georgia Tech Counseling. An English-speaking therapist approved by Cultural Insurance Services International (CISI) is also available for therapeutic services via Skype.

The Georgia Tech Counseling Center has a twenty-four-hour emergency consultation service. Students may contact an on-call counselor through GTPD at 404-894-2500. You do not have to file a police report for counseling assistance. Aftercare in the form of counseling, advocacy, and follow-up is also available from national hotlines such as RAINN (Rape, Abuse, and Incest National Network) or the National Domestic Violence Hotline.

Advocate Services

In addition to assistance from the Georgia Tech Counseling Center, Health Initiative has two full-time VOICE advocates on staff who can provide immediate and ongoing support to a victim-survivor as they cope with the experience of sexual violence, including information on reporting options, regardless of when the violence occurred. An on-call advocate is available for support 24/7 and can be reached after hours through GTPD (404-894-2500). Advocates can assist victim-survivors of any gender in identifying resources to cope with the aftermath of sexual violence.



GT-Shenzhen Resources

For Students

Voice – 404-894-9980

The Office of Health Initiatives has two full-time VOICE Advocates on staff who can provide confidential, immediate, and ongoing support to a victim-survivor coping with an experience of sexual violence. Support includes information about reporting options, regardless of when or where the violence occurred, facilitation of accommodations, and connecting victim-survivors with resources if they are struggling with classes, relationships, or other effects of their experience. In addition, VOICE provides information, educational programs, referrals, and support for sexual assault, rape, dating or domestic violence, sexual harassment, stalking, and related issues.

Georgia Tech Police Department (GTPD) – 404-894-2500

Officers from GTPD can support the investigation and prosecution of cases, and ensure the well-being of victims. Several members of GTPD are involved with the Sexual Violence Prevention Alliance on campus.

Office of the Vice President for Student Life and Dean of Students – 404-894-6367

The Office of the Vice President for Student Life and Dean of Students can serve as an advocate for students in reporting incidents of sexual violence, and provide resources and referrals for victims. It also enforces Institute judicial actions in response to sexual violence through the Office of Student Integrity.

Women’s Resource Center (WRC) – 404-385-0230

The Women’s Resource Center, part of the Division of Student Life, can provide information, referrals,

and support for Georgia Tech students, faculty, and administration regarding sexual violence and related issues. Staff are trained to work with victim-survivors of all genders.

Women's Health – 404-894-1434

Women's Health at Stamps Health Services has staff who provide services for sexual and reproductive health needs. Women's Health offers pelvic exams and pap smears, contraception, including emergency contraception, and STI screening. They do not, however, collect rape kits.

Georgia Tech Counseling Center – 404-894-2575

The Georgia Tech Counseling Center offers free confidential counseling services for Georgia Tech students who have been victims of sexual violence, as well as other types of counseling services.

Title IX Coordinator – 404-385-5151

Georgia Tech's Title IX Coordinator serves as a resource for gender equity on campus and helps shape campus assessments and policies. The Title IX coordinator is supported by an advisory committee of campus leaders and students who assist in the identification of initiatives and assessment. Any alleged violations of Title IX or grievances should be reported immediately and will be treated in as confidential a manner as permitted under the law. (www.titleix.gatech.edu)

LGBTQIA Resource Center – 404-385-2679

The Center coordinates a range of programs and events throughout the year aimed at educating faculty, students, and staff about LGBTQIA issues, providing safe spaces for LGBTQIA students to build community and explore their identities, and facilitating conversations about LGBTQIA diversity, equity, and inclusion. The director holds drop-in hours throughout the year for students, faculty, and staff who want to discuss needs and concerns.

Resources for Faculty and Staff

Employee Assistance Program (EAP) – 404-894-1225

The EAP is a confidential counseling service that assists employees in addressing emotional and mental health concerns. Appointments are available at locations convenient to home or work and mental health professionals are available by phone 24 hours a day. More information is available at <https://health-and-wellbeing.gatech.edu/eap>.

Georgia Tech Police Department (GTPD) – 404-894-2500

Officers from GTPD can support the investigation and prosecution of cases, and ensure the well-being of the victim. Several members of GTPD are involved with the Sexual Violence Prevention Alliance on campus.

Title IX Coordinator – 404-894-0300

Georgia Tech's Title IX Coordinator serves as a resource for gender equity on campus and helps shape campus assessments and policies. The Title IX coordinator is supported by an advisory committee of campus leaders and students who assist in the identification of initiatives and assessment. Any alleged

violations of Title IX or grievances should be reported immediately and will be treated in as confidential a manner as permitted under the law. (www.titleix.gatech.edu)

LGBTQIA Resource Center – 404-385-2679

The Center coordinates a range of programs and events throughout the year aimed at educating faculty, students, and staff about LGBTQIA issues, providing safe spaces for LGBTQIA students to build community and explore their identities, and facilitating conversations about LGBTQIA diversity, equity, and inclusion. The director holds drop-in hours throughout the year for students, faculty, and staff who want to discuss needs and concerns.

Reporting Options for Sexual Violence

For Georgia Tech students, faculty, and staff who experience sexual violence, including sexual assault, dating or domestic violence, stalking, or sexual harassment, there are several basic reporting options, depending on whether the victim wishes to file a confidential or anonymous report, pursue an Institute investigation, or seek a criminal investigation with the assistance of the GT-Shenzhen staff and the GTPD. Reporting options are described in the University System of Georgia (USG)'s sexual misconduct policy, on which Georgia Tech's sexual misconduct policy is based. Links to Georgia Tech's policy can be found at: <http://policylibrary.gatech.edu/student-life/student-sexual-misconduct>.

Additional information can also be found at:
<http://titleix.gatech.edu>.

When a report is received through one of these methods, the victim receives written notice of their rights and options, including, where appropriate, information about orders of protection, no-contact orders, and restraining orders. A victim also has the right to choose not to file any report. In that case, a student victim can still receive support services from VOICE in Health Initiatives, or the Counseling Center, and a faculty or staff member can still receive support services from the Employee Assistance Program. A listing of the resources available to victim-survivors may be found at:

<http://titleix.gatech.edu/content/title-ix-resources> and:
<http://healthinitiatives.gatech.edu/resources>

To File a Confidential Report

Student victims may file a confidential report with a VOICE Advocate in Health Initiatives, who can help a student navigate their options for any other report that they would like to make. For incidents covered by the Clery Act, VOICE Advocates share general information without identifying any parties involved for campus safety statistics.

In addition to VOICE in Health Initiatives, confidential resources also include the Counseling Center, the Women's Resource Center, LGBTQIA Resource Center, and Stamps

Health Services. Confidential resources who are also Campus Security Authorities (CSA) will collect general information for campus safety statistics, but will not refer the case to the Title IX Coordinator.

By contrast, CSAs who are not confidential resources and are, instead, “Responsible Employees” under Georgia Tech’s Sexual Misconduct Policy will refer the case to the Title IX Coordinator for follow-up, in addition to collecting information for campus safety statistics. If someone reports an incident to a Responsible Employee on campus, the report cannot remain confidential. The Responsible Employee is obligated to inform the Title IX Coordinator. If identifying information is provided, the Title IX Coordinator will endeavor to use that information to investigate the matter. Examples of identifying information include, but are not limited to: name, email account, apartment or room number, job title (e.g., TA for a particular class), specific description.

Faculty and staff who experience or wish to report concerns of sexual violence may file a confidential report through EthicsPoint (a neutral third-party host) by completing an online form at <https://secure.ethicspoint.com/domain/media/en/gui/7508/index.html> or by calling 1.866.297.0224 and having EthicsPoint transcribe the information and send it to the Institute. General information is collected for campus safety statistics, and the case is referred for investigation – to the extent possible given the information provided.

To Pursue an Title IX/Institute Investigation

If the accused individual is a student, the victim may report the violation in writing or in person to the Title IX Coordinator to begin the investigation.

To prepare for the official conduct process, students are encouraged to meet with a victim-survivor advocate in Health Initiatives prior to making the official report with the Title IX Coordinator.

A victim-survivor advocate will share information with a student about their rights, explain the reporting and investigation process, and share additional resources. Visit www.voice.gatech.edu for contact information for the victim-survivor advocates. Victims are encouraged to report as soon as possible. However, the Title IX Coordinator will review all complaints.

Although the goal is to limit the number of individuals who may learn about an allegation or investigation of misconduct, Georgia Tech cannot guarantee confidentiality once a complaint has been made.

To pursue an Office of Human Resources investigation

If the accused individual is a faculty or staff member, the victim may file a report with Georgia Tech Human Resources (GTHR) or the Title IX Coordinator (or a Deputy Title IX Coordinator) to be investigated by GTHR.

Faculty and staff who experience or wish to report concerns of sexual violence may file a report with GTHR, the Title IX Coordinator or a Deputy Title IX coordinator, or through EthicsPoint (a neutral third-party host) by completing an online form at www.ethicspoint.com or by calling 1.866.294.5565 and having EthicsPoint transcribe the information and send it to the Institute. General information is collected for campus safety statistics, and the case is referred to the Institute's Title IX Coordinator for investigation through that office or through GTHR – to the extent possible given the information provided.

To pursue a criminal investigation

All victims may file a report with the GTPD or local police for a criminal investigation, which may be sought in conjunction with an Institute investigation. Georgia Tech will honor all protection and no-contact orders issued by a criminal court as directed by law.

Reports to the GTPD will be shared with the Division of Student Life and the Title IX coordinator, and will be investigated for violation of policy or other violations of the Sexual Misconduct Policy.

A VOICE advocate can assist students with reporting to the GTPD or local police. Visit www.voice.gatech.edu for contact information for the advocates.

Sexual Misconduct Disciplinary Procedures

Students

All investigations concerning sexual violence by a Georgia Tech student will be prompt, fair, and impartial. The standard of proof utilized in these cases is preponderance of the evidence. Preponderance of the evidence, as an evidentiary standard, means that it is more likely than not the alleged violation of policy occurred. All Student Sexual Misconduct Policy investigation, resolution, and appeal processes are carried out by those who have received annual training on issues related to sexual assault, dating or domestic violence, and stalking, and how to conduct a sexual misconduct investigation, resolution, and appeal process that protects the safety of victims, maintains fairness/impartiality for accused individuals, and promotes student accountability.

Potential violations or individuals reported to GTPD will be investigated per the procedures found in the Student Sexual Misconduct Policy and the Institute's Student Code of Conduct. Due process rights of the victim and accused individual will be observed. If it is determined

that a violation of policy has occurred, disciplinary action may be taken, up to and including the expulsion of the offender. The severity of any disciplinary action will depend on the frequency or severity of the offense and the history of past misconduct by the accused.

For more information, see the Student Sexual Misconduct Policy at:
www.policylibrary.gatech.edu/student-sexual-harassment-misconduct-policy

No-Contact Order

Upon receipt of a report of student sexual misconduct, the Office of Student Integrity may issue a no-contact order between the parties involved in the case. The no-contact order prohibits communication between/among the parties, including but not limited to: contact by telephone, email, hand-written note, instant messaging, and text messaging, online postings/message boards, through a third person, or in person. This includes any email or message accounts that are affiliated with the parties' identities. If any party violates the no-contact order, the Office of Student Integrity may pursue additional disciplinary action.

In certain circumstances, the Dean of Students may also impose an interim suspension in accordance with the Code of Conduct.

Student Rights:

The following rights apply to student complainants and respondents:

- To have any and all acts of sexual misconduct handled with seriousness, dignity, and respect.
- To receive information outlining the student procedures regarding sexual misconduct.
- To receive information about options to report sexual misconduct (i.e., campus and/or local police, the Office of Student Integrity, and the confidential reporting form) and to receive assistance from an advocate if requested.
- To receive a prompt, fair, and impartial investigation and resolution.
- To have the investigation, resolution, and appeal process be carried out by those who have received annual training on issues related to sexual assault, dating or domestic violence, and stalking, and how to conduct a sexual misconduct investigation, resolution, and appeal process that protects the safety of victims, maintains fairness/impartiality for accused individuals, and promotes student accountability.
- To be informed of the date and location of any meetings involved in the investigation and resolution process.
- To seek information or updates from the Office of Student Integrity at any point throughout the investigation and resolution process.
- To have an advisor of one's choice present during any meetings and proceedings involved in the investigation and resolution process.

- To be informed in writing of any policies alleged to have been violated in association with the incident.
- To have the opportunity to provide information regarding his or her involvement in the allegation.
- To be informed of the outcome in writing of any campus disciplinary proceeding.
- To be notified of options and offered assistance in changing academic, living, transportation, and working situations, if requested – as long as the changes are reasonably available.
- To receive support services (i.e., campus counseling, medical assistance).
- To not to have mediation imposed as a resolution process.
- To appeal the outcome in accordance with the applicable provisions of the Student Sexual Misconduct Policy.
- To be informed in writing of any change to the outcome due to appeal, and when the outcome becomes final.
-

Note: Compliance with these provisions does not constitute a violation of section 444 of the General Education Provisions Act (20 U.S.C. 1232g), commonly known as the Family Educational Rights and Privacy Act of 1974 (FERPA).

Faculty and Staff

All investigations concerning sexual misconduct by a Georgia Tech faculty or staff member will be prompt, fair, and impartial, and shall be conducted by officials who receive annual training on issues related to sexual harassment, sexual assault, dating or domestic violence, and stalking, and how to conduct a sexual misconduct investigation process that protects the safety of victims, maintains fairness/impartiality for accused individuals, and promotes employee accountability.

Faculty or staff investigation procedures will determine findings of fact using the preponderance of the evidence standard, which means that it is more likely than not that a violation of Georgia Tech policy has occurred. If it is determined that a violation of policy has occurred, disciplinary action may be taken, up to and including termination of employment. The severity of any disciplinary action will depend on the frequency or severity of the offense and the history of past misconduct by the employee.

Confidentiality

Although the goal is to limit the number of individuals who may learn about an allegation or investigation of sexual misconduct, Georgia Tech cannot guarantee confidentiality in all cases. Georgia Tech, however, will make reasonable and appropriate efforts to preserve the victim's and accused individual's privacy and to protect the confidentiality of information. To the extent permissible by law, Georgia Tech shall take reasonable steps to avoid inclusion

of identifying information about a victim-survivor or accused individual from publicly available records.

Retaliation

Georgia Tech does not tolerate retaliation against anyone who makes a complaint of sexual misconduct, whether reported to Georgia Tech or an external agency, or against anyone who exercises their rights or responsibilities under Georgia Tech's policies. If any party involved in a sexual misconduct incident or conduct process retaliates in any way, she or he may be subject to additional disciplinary action. For more information, see the Georgia Tech Anti-Harassment Policy at: www.policylibrary.gatech.edu/employment/anti-harassment-policy, <https://policylibrary.gatech.edu/employment/non-retaliation-policy>, and the University System of Georgia Sexual Misconduct policy at <https://www.usg.edu/policymanual/section6/C2655>.

Sex Offender Registry

China does not maintain a sex offender registry. Information about an individual's past criminal history is not made available to the public.

Definitions of Reportable Clery Act Crimes and Geography

Primary Crimes

Murder / Manslaughter: *The willful killing of one human being by another.*

Negligent Manslaughter: *The killing of another person through gross negligence.*

Sex offenses: *Any sexual act directed against another person, without the consent of the victim, including instances where the victim is incapable of giving consent.*

Rape: *The penetration, no matter how slight, of the vagina or anus with any body part or object, or oral penetration by a sex organ of another person, without the consent of the victim.*

Fondling: *The touching of the private body parts of another person for the purpose of sexual gratification, without the consent of the victim, including instances where the victim is incapable of giving consent because of his/her age or because of his/her temporary or permanent mental incapacity.*

Incest: *Non-forcible sexual intercourse between persons who are related to each other within the degrees wherein marriage is prohibited by law.*

Statutory Rape: *Non-forcible sexual intercourse with a person who is under the statutory age of consent.*

Robbery: *The taking or attempting to take anything of value from the care, custody, or control of a person or persons by force or threat of force or violence and/or by putting the victim in fear.*

Aggravated Assault: *Unlawful attack by one person upon another for the purpose of inflicting severe or aggravated bodily injury. This type of assault usually is accompanied by the use of a weapon or by means likely to produce death or great bodily harm.*

Burglary: *Unlawful entry of a structure to commit a felony or a theft.*

Motor Vehicle Theft: *The theft or attempted theft of a motor vehicle.*

Arson: *Any willful or malicious burning or attempt to burn, with or without intent to defraud, a dwelling, house, public building, motor vehicle or aircraft, or personal property of another, etc.*

Hate Crimes: *Includes all of the crimes listed above that manifest evidence that the victim was chosen based on one of the categories of bias listed below, plus the following crimes.*

Larceny/Theft: *This includes pocket picking, purse snatching, shoplifting, theft from a building, theft from a motor vehicle, theft of motor vehicle parts or accessories, and all other larceny.*

Simple Assault: *An unlawful physical attack by one person upon another where neither the offender displays a weapon, nor the victim suffers obvious severe or aggravated bodily injury involving apparent broken bones, loss of teeth, possible internal injury, sever laceration, or loss of consciousness.*

Intimidation: *To unlawfully place another person in reasonable fear of bodily harm through the use of threatening words and/or other conduct but without displaying a weapon or subjecting the victim to actual physical attack.*

Destruction/Damage/Vandalism or Property (except arson): *To willfully or maliciously destroy, damage, deface, or otherwise injure real or personal property without the consent of the owner or that person having custody or control of it.*

Categories of Prejudice

Race: *A preformed negative attitude toward a group of persons who possess common physical characteristics genetically transmitted by descent and heredity, which distinguish them as a distinct division of humankind.*

Gender: *A preformed negative opinion or attitude toward a group of persons because those persons are male or female.*

Gender Identity: *A preformed negative opinion or attitude toward a person or group of persons based on their actual or perceived gender identity, i.e. bias against transgender or gender nonconforming individuals.*

Religion: *A preformed negative opinion or attitude toward a group of persons who share the same religious beliefs regarding the origin and purpose of the universe and the existence or nonexistence of a supreme being.*

Sexual Orientation: *A preformed negative opinion or attitude toward a group of persons based on their sexual attraction toward, and responsiveness to, members of their own sex or members of the opposite sex.*

Ethnicity/National Origin: *A preformed negative opinion or attitude toward a group of persons of the same race or national origin who share common or similar traits, languages, customs, and traditions.*

Disability: *A preformed negative opinion or attitude toward a group of persons based on their physical or mental impairments/challenges, whether such disability is temporary or permanent, congenital, or acquired by heredity, accident, injury, advanced age, or illness.*

Arrest and Referral Crimes

Weapons Offenses: *The violation of laws or ordinances prohibiting the manufacture, sale, purchase, transportation, possession, concealment, or use of firearms, cutting instruments, explosives, incendiary devices, or other deadly weapons.*

Drug Laws: *The violation of laws prohibiting the production, distribution, and/or use of certain controlled substances and the equipment or devices utilized in their preparation and/or use. The unlawful cultivation, manufacture, distribution, sale, purchase, use, possession, transportation, or importation of any controlled drug or narcotic substance. Arrests for violations of state and local laws, specifically those relating to the unlawful possession, sale, use, growing, manufacturing, and making of narcotic drugs.*

Liquor Laws: *The violation of state or local laws or ordinances prohibiting the manufacture, sale, purchase, transportation, possession, or use of alcoholic beverages, not including driving under the influence and drunkenness.*

Dating Violence, Domestic Violence, and Stalking

Dating Violence: *Violence committed by a person who is or has been in a social relationship of a romantic or intimate nature with the victim.*

Domestic Violence: *A felony or misdemeanor crime of violence committed:*

- *By a current or former spouse or intimate partner of the victim;*
- *By a person with whom the victim shares a child in common;*
- *By a person who is cohabitating with or has cohabitated with the victim as a spouse or intimate partner;*
- *By a person similarly situated to a spouse of the victim under the domestic or family violence laws of the jurisdiction in which the crime of violence occurred, or*

- *By any other person against an adult or youth victim who is protected from that person's acts under the domestic or family violence laws of the jurisdiction in which the crime of violence occurred.*

Stalking: *Engaging in a course of conduct directed at a specific person that would cause a reasonable person to:*

- (i) Fear for his or her safety or the safety of others; or*
- (ii) Suffer substantial emotional distress.*

Annual Security Report Crime Statistics

Based on the 2018 Clery Handbook, the crime data from 2016 to 2018 in the area of 133 Tangxing Road in the Nanshan District of Shenzhen and nearby passage ways is reported below.

	2016	2017	2018
Criminal Homicide (Murder or Manslaughter)	0	0	0
Sex Offenses	0	0	0
Robbery	0	0	0
Aggravated Assault	0	0	0
Burglary	0	0	0
Motor Vehicle Theft	0	0	0
Arson	0	0	0

Larceny-Theft	0	0	0
Simple Assault	0	0	0
Intimidation	0	0	0
Destruction/Damage/Vandalism of Property	0	0	0
Hate Crime	0	0	0
Stalking	0	0	0
Dating Violence	0	0	0
Domestic Violence	0	0	0
Weapons: Carrying, Possessing, etc.	0	0	0
Drug Abuse Violations	0	0	0
Liquor Law Violations	0	0	0

Annual Student Housing Fire Safety Report

Student housing in Shenzhen is used by Georgia Tech-Shenzhen by agreement with Shenzhen Government. Per the Clery Handbook on-campus definition (34 CFR 668.46(a), Georgia Tech-Shenzhen controls student housing.

Students on the Georgia Tech-Shenzhen campus are expected to follow Institute policies for fire safety. The housing facilities have fire alarm systems equipped with smoke detection. Fire evacuation drills are performed a couple of times a year by the local fire department and the property management company. Direction on evacuation procedures are provided by building management. Evacuation maps are posted in resident hallways. In case of fire, students are instructed to call the local fire department by dialing 119.

Georgia Tech-Shenzhen Student Housing Fire Safety Overview – 2018

Buildings	Number of Beds	Fire Alarm System	Sprinkler System	Date Constructed	Last Renovation	Scheduled Renovation	Evacuation Drills Completed
B55	396	Yes	--	--	2018	No	--

Georgia Tech-Shenzhen Student Housing Fire Statistics Log: 2017-2018

There were no reported fire incidents in Georgia Tech-Shenzhen on-campus student housing in 2017 or 2018.

Buildings	Date	Time	Fires	Fire Cause	Injuries	Deaths	Property Damage
B55	--	--	--	--	--	--	--
Total	0	0	0	0	0	0	0

Other Important Numbers

You may contact the following departments for more information about the topics covered in this brochure:

Georgia Tech-Shenzhen	404-385-1341
Campus Police	404-894-2500
Counseling Center	404-894-2575
Dean of Students	404-894-2564
Health Initiatives.....	404.894.9980
VOICE Advocate.....	404.385.4464
	or 404.385.4451
VOICE Sexual Violence Information Line	404.894.9000
Human Resources.....	404.894.4847
Title IX Coordinator.....	404.385.5151

Other Emergency Numbers

Georgia Tech Counseling Center	404-894-2575
Sexual Assault Information Line	404-894-9000
National Suicide Prevention Lifeline	